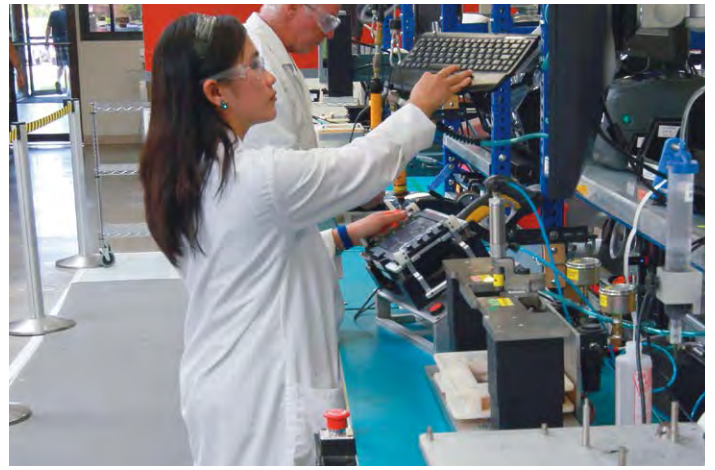
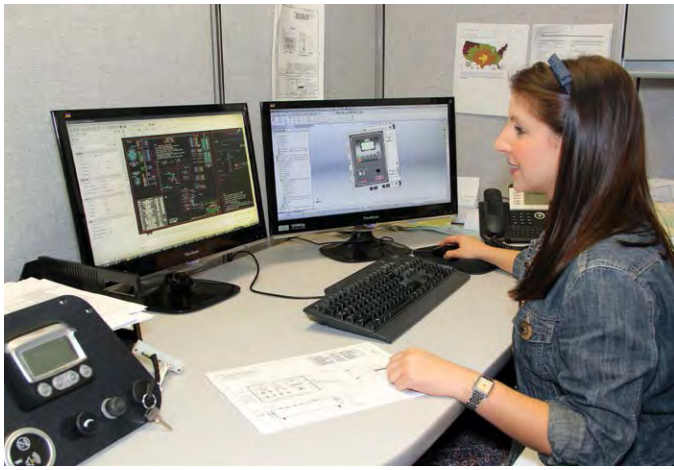




by *ENOVATION* CONTROLS

CONDENSED CATALOG

CONTROLS & INSTRUMENTATION

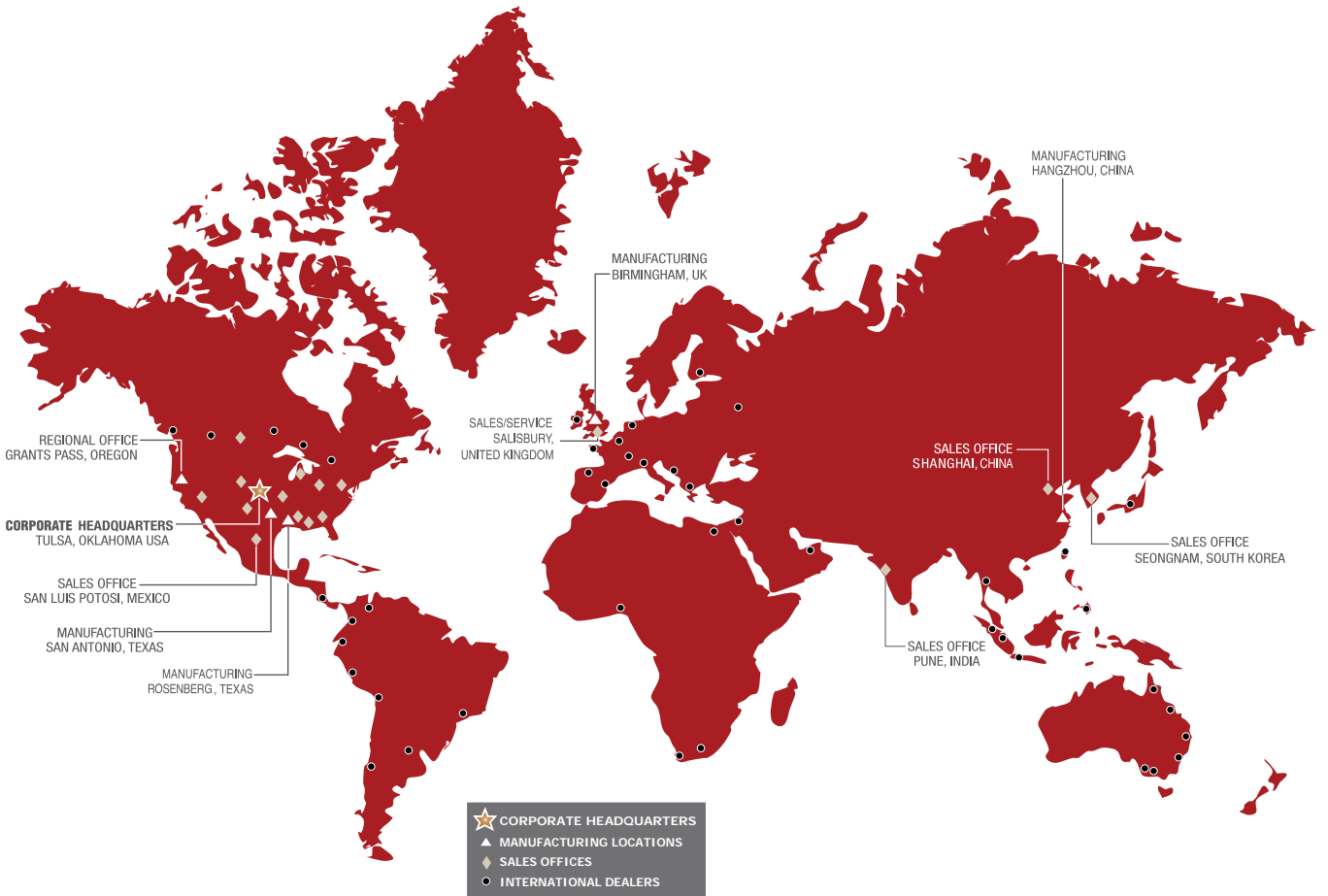


Murphy Products

The Murphy product line includes hundreds of products to monitor and control critical functions of engines and engine-driven equipment. We have J1939 CAN displays and instrumentation, compressor controls, engine controls, custom panels, auto start/stop controllers, sensors and more.

We provide reliable, innovative products focused on meeting customer needs and have been doing so for over 70 years. Browse some of our most popular product offerings, as well as several new additions to the Murphy product lineup.





Murphy Products

INTRODUCTION	2-3
LOCATIONS	4
INDEX	5
GAGES	6-9
DISPLAYS	10-13
ENGINE CONTROLS	14-17
PANELS AND SYSTEMS	18-21
COMPRESSOR CONTROLS	22-23
PROCESS MONITORING INSTRUMENTS	24-27
CONTACT INFORMATION	28

GAGES

Murphy's history of innovation started with the introduction of the Swichgage® in 1939. Since then the Murphy product line has expanded to include a number of gages for monitoring of engine critical applications. All of our gages were designed to provide highly-accurate, long-lasting monitoring in even the harshest applications.

Mechanical Pressure Swichgage® and Gage Instruments (Catalog Section 5)

Featured Products: 2" and 4.5" Dial Gages

- Classic Swichgage design
- Combination indicating pressure gage and limit switch
- Pressure limit switch visible and adjustable
- Switch can activate alarms and/or shutdown equipment



Most of these products feature standard normally open switch outputs

	pressure	differential pressure	vacuum	hazardous rated*	2" 51 mm	2.5" 64 mm	4.5" 114 mm	NO/NC systems*	diaphragm 90° sweep	bourdon tube 270° sweep
20P/25P	•				•	•		•	•	
A20P/A25P	•			•	•	•		•	•	
20V/A20V/25V/A25V			•		•	•		•	•	
20DP/A20DP/25DP/A25DP		•			•	•		•	•	
20VWC/25VWC/A25VWC			•		•	•		•	•	
20BPG**		•			•				•	
OPL-series		•		•	•		•			•
OPL-BP-series		•		•	•		•			•
45APE		•		•	•		•	•		•
PT167EX		•			•		•			•

*Specific models only

**No contacts

Mechanical Temperature Switchgag[®] and Gage Instruments (Catalog Section 10)

Featured Products: **A20T 2" Dial** and **SPLFC 4.5" Dial Gages**

- Indicating temperature gage and limit switch
- Temperature sensing bulb element
- Switch can activate alarms/shutdown equipment
- Contact(s) isolated from ground
- Standard normally open switch outputs



	metal case	polycarbonate case	direct mount	2" 51 mm	2.5" 64 mm	4.5" 114 mm	hazardous rated*	NO/NC systems*	diaphragm 90° sweep	bourdon tube 270° sweep	bimetal
20T/25T	•			•	•			•	•		
A20T/A25T		•		•	•		•	•			
SPL-series	•					•	•			•	
20BTG**	•			•				•			
45TE-series	•					•	•	•		•	
SDB-series	•		•				•				•

*Specific models only
 **No contacts

GAGES continued

Electric Switchgage® and Gage Instruments and Senders (Catalog Section 70)

Featured Products:

EG21V Gage and EGS21P Switchgage

- EG Air Core movement design
- Rugged design exceeds SAE J1810 standards
- SWITCHGAGE® models
 - Adjustable set point
 - Solid-state switch output



	gage	sender	pressure	temperature	fuel level	voltage and current	switching	weather seals
EG21-series	•		•	•	•	•		•
EGS21-series	•		•	•	•	•	•	•
ESP-series		•	•	•				
EST-series		•		•				
ESF-series		•			•			

Time Vibration and Overspeed Instruments (Catalog Section 20)

Featured Product:

ATH Tachometer/Hourmeter

- Sensing from magnetic sensor signal or battery charging alternator
- High visibility analog readout
- 12/24 VDC
- Through-dial lighting



	tachometer	hourmeter	digital	analog	magnetic pickup	alternator	battery voltage ignition	electro-mechanical	backlit
MT90	•		•	•	•	•		•	•
MTH6	•		•	•	•	•	•	•	•
TM-series		•	•	•				•	
AT-series		•		•				•	•

PowerView™ Analog Gages
(Catalog Section 78)



Featured Product:

MurphyLink® PVCAN20-B CAN-Direct Temperature Gage

- Displays J1939 parameters in an analog gage
- Designed as a CAN-Direct gage without the need for a driving device
- Smooth needle movement
- 270° sweep pointer
- Wide selection of lens and bezel styles and colors
- Adjustable LED backlighting
- Common parameters include: pressure, temperature, time, speed, volts, fuel

	power supply input voltage	2 inch 51 mm	3.5 inch 89 mm	displays J1939 data	driven by PV101	RS485	J1939	audible alarm
PVCAN gage	8 - 32	•	•	•	•	•	•	
PVA gage	6 - 32	•	•	•	•	•		
PVAA alarm	8 - 32	•	•	•	•	•		•
PVM gage	5	•	•	•	•	•		

PowerView™ Analog Gages
(Catalog Section 78)



Featured Product:

PVA Analog Gage

- Displays SAE J1939 parameters
- Stepper Motor technology
- Microprocessor driven for High accuracy

DISPLAYS

The PowerView™ and HelmView™ line of electronic displays were designed for the future of engine technology. Murphy display products give operators a clear, concise look into modern engines while allowing for ease of integration into any application. A range of display options are available – from basic diagnostic devices to more advanced multifunction displays with full integration and customization capabilities.

J1939/CAN PowerView™ Displays (Catalog Section 78)

Featured Products: PV780 and PV450 Displays

- Electronic J1939 display
- Full integration in a multi-function display
- Fully customizable screens and controls through PowerVision Configuration Studio™
- PowerVision Configuration Studio allows simple to sophisticated use interface designs
- Service reminder support and data logging capability
- Multiple display sizes available



	power supply	display	CAN ports	optional GPS display	optional video	screen size (diagonal)	Tier 4 Ready
PV780	12 / 24	color WVGA	2	•	•	7" (177mm)	•
PV450	12 / 24	color WGVCGA	2	•	•	4.3" (109mm)	•
PV350	12 / 24	monochrome QVGA	2	•	•	3.8" (97mm)	•
PV380	12 / 24	monochrome QVGA	1	•	•	3.8" (97mm)	•
PV101	12 / 24	monochrome LCD	1			2.8" (71mm)	•
PV25	12 / 24	monochrome LCD	1			1.4" (36mm)	•

J1939/CAN PowerView™ Displays
(Catalog Section 78)



Featured Product: **PV350/380 Display**

- 3.8" QVGA monochrome LCD
- Integrates standard J1939 parameters and fault codes
- Setpoint alarm and shutdown control
- Customizable through PowerVision Configuration Studio
- Rugged/reliable design



Featured Product: **PV101 Display**

- Displays SAE J1939 standard parameters and diagnostic trouble codes
- Customizable screens and multiple language capabilities
- Rugged/reliable design
- Tier 4/Euro Stage IIIB compliant
- Software configuration tool available



Featured Product: **PV25 Display**

- Displays up to 20 standard J1939 messages
- Standard and proprietary diagnostic codes
- Hourmeter and tachometer
- Compact, 2inch dia. dial face

DISPLAYS continued

HelmView J1939 Electronic Displays
(Catalog Section 78)

Featured Products: HV750 and HVS450 Display

- ABS certified display for Commercial Marine applications (Model HV750 only)
- Fully customizable through PowerVision Configuration Studio
- J1939 and NMEA 2000 capable
- Day and Night mode screens



	power supply	display	CAN ports	optional GPS display	optional video	screen size (diagonal)
HVS780	12 / 24	color WVGA	2	•	•	7" (177mm)
HV750	12/24	color WVGA	3	•	•	7" (177mm)
HVS450	12 / 24	color WQVGA	2	•	•	4.3" (109mm)

MurphyLink J1939 Products

Expandable I/O Modules
(Catalog Section 78)



Featured Product: XM500

- Adds I/O to existing J1939 network
- Wide operating temperature range
- Deutsch enclosure and connectors



Featured Product: SenderCAN™

- Adds I/O to existing OEM ECU
- Compatible with SAE J1939 CANbus engines
- Up to 4 sender/switch inputs
- Up to 2 gauge/control outputs

Other MurphyLink J1939 Products



- CANdrive™ — Interface to Drive Electric Gages
- FuelCAN™ — Fuel Sender to CAN
- MeCAN™ — Magnetic Pickup (MPU) and Analog Inputs to CAN

ENGINE CONTROLS

EICS – Engine Integrated Controls System (Catalog Section 40)

The Engine Integrated Control System breathes new life into stationary engines. This turn-key engine integration package quickly and easily brings up-to-speed old engines – saving time and the hassle associated with sourcing and installing separate components.

Electronic Governing/
Suction Pressure Base
Speed Control

Engine Control Module (ECM)

- Ignition
- Air/Fuel Ratio
- Diagnostics
- Efficiency
- Regulation
- Reporting
- Local/Remote
- Speed Governing

Air / Fuel Management
Mixer

Color Display for Operation,
Status and Diagnostics



Air / Fuel Management
EPR Electronic Pressure
Regulator

Integrated Catalyst/
Sensor Package



EICS Application Key
- Suction/Discharge Control
- Emission Control



Smart Coils

Harnesses

Ignition Controls
(Catalog Section 40)



Featured Product: **IntelliSpark-16D Controller**

- Crankshaft-referenced microprocessor-based system
- True primary and secondary diagnostics
- Five timing reference options, including camless operation
- 16-bit microprocessor controller
- Field-programmable front panel display

	outputs	energy storage	simultaneous pairing	crankshaft reference	remote comm port	CSA certified CI 1, Div. 2 Gps. B,C, D
IntelliSpark-8	8	125 mJ		•	•	•
IntelliSpark-16	16	125 mJ		•	•	•
IntelliSpark-32	32	180 mJ	•	•	•	•
IntelliSpark-601	1	250 mJ		•		



Air/Fuel Controls
(Catalog Section 40)

Featured Product: **AFR-9R Multipoint Air/Fuel Ratio Controller**

- Simplest multi-setpoint, load following controller
- Configuration via menu driven HMI/display (no laptop required)
- 9 air/fuel targets for 9 load levels
- Pre and Post catalyst oxygen sensor feedback
- Streamlined menu-driven navigation
- On-screen help and setup tips

	engine type	number of setpoints	configurable by	post-catalyst sensor input option	manifold pressure sensor input	manifold temperature sensor input	diagnostic plotting & logging	closed-loop oxygen sensor feedback control	open-loop feed forward control
AFR-1R	carburetor rich burn	1	keypad	•		•		•	•
AFR-9R	carburetor rich burn	9	keypad	•	•	•		•	•
AFR-64R	carburetor rich burn	64	laptop	•	•	•	•	•	•
AFR-64L	carburetor lean burn	64	laptop		•	•	•	•	•
AFR-FI	fuel injected	20	keypad		air & fuel	thermocouple or RTDT	SCADA ready		

ENGINE CONTROLS continued

Engine Controllers
(Catalog Section 40)

Featured Product: **EMS-GC10**

- Controls and monitors both engines and generators simultaneously
- Compatible with mechanical and electronic J1939 engines
- Supports Automatic Mains Failure (AMF)
- Easy-to-use PC Configuration Tool



Featured Products: **EMS PRO** and **EMS PROlite** Engine Monitoring System Controllers

- Automatic start and stop control with backlit graphical display
- One panel compatible for both mechanical and J1939 electronic engines
- Modbus® RTU internet ready all within a NEMA 4 enclosure
- Interim Tier 4 compliant



	autostart/ stop	digital	display	LED indicator	mechanical engines support	electronic engines support (J1939)	configurable
EMS PRO	•	•	•	•	•	•	•
EMS PROlite	•	•	•	•	•	•	•
Cascade CD101	•	•	•	•	•	•	•
ASM series	•	•	•	•	•	•	•
A91 Series	•	•	•	•	•	•	•

Other Engine Controls:

- **Keystart** – manual start/stop and automatic fault protection on mechanical engines
- **CANstart** – start/stop and automatic fault protection on J1939 engines, drives electric gages

Electro-Mechanical Controls
(Catalog Section 40)

Featured Product: **RP75 Rack Puller for Diesel Engines**



- Pulls injection pump or air intake shut-off lever
- 30 lbf operating force
- Available for 12- or 24-volt systems
- Operates on signal from Switchgag instruments via Tattletale® Annunciator

	throttle	clutch	rack puller	ETS	omnivoltage	12VDC	24VDC
AT03069	•				•		
C03		•				•	•
RP75			•	•		•	•
RP2307/RP2310				•	•		•

Battery Chargers
(Catalog Section 75)

Featured Products:

**Sentinel 300P and
Sentinel 150 Battery Charger**



- Automatic float and boost charging
 - Temperature charging compensation
 - Option for analog metering, backlit display, control/ alarm I/O and RS485/CAN J1939 datacomms
 - Standards compliance: UL1236, CSA, CE, NFPA110*
- (*selected models only)

	float charging	auto boost	temperature compensation	maximum current ADC	nominal voltage VDC	charge fail relay output
Sentinel 150	•	•	•	5A @ 12/24VDC 10A @ 12VDC	12/24	•
Sentinel 300P	•	•	•	10A @ 12/24VDC	12/24	•

▼ PANELS AND SYSTEMS

We offer a complete selection of custom and standard panel offerings to fit your unique application requirements. Our staff of dedicated panel engineers is available to design and build a customized panel solution complete with custom programming and configuration perfectly suited for your application. Standard panel offerings are also available and are backed by many years of expertise with both electronic and mechanical engines

Panel Systems for Electronically-Controlled Engines
(Catalog Section 30)

Featured Product: ML-Series MurphyLink® Panels

- Standard panels for many modern electronic engines
- Standard wiring harnesses available for most manufacturer's ECUs
- Deutsch connectors for easy installation
- Optional controllers available for engine automation



Murphy Industrial Harnesses (MIH)
available for simple panel installation.

Pump Control and Power Units

	Electronic Engines	Digital Display	CAN gages	Tier 4	Throttle
ML25 series	•	PV25		•	discrete
ML50 series	•	PV25	•	•	discrete
ML100 series	•	PV101		•	discrete
ML150 series	•	PV101	•	•	discrete/rotary
ML300 series	•	PV300		•	discrete



Commercial Marine Panels for Mechanically Controlled Engines (Catalog Section 30)

Featured Product:
MLP300 Series Panel

- Standard panel offering with remote and local monitoring stations
- Multiple visual and audible alarm points
- Monitors essential engine parameters
- Single and dual pyrometer options available



Panel Systems for Generator Sets
(Catalog Section 75)

Featured Product: **MGC400 Panel**

- Compatible with mechanical and electronic engines
- Features EMS-GC10 Genset controller
- Power on-off switch (toggle)
- Stop Button

	mechanical engines	electronic engines	metering (volts amps hetz)	digital display	analog gages	autostart	applications
MGC25	•	•	•				Power Gen. - Metering
MGC50	•	•	•				Power Gen. - with Keyswitch
MGC100	•	•	•		electric gages	•	Power Gen. - Cascade
MGC150	•	•	•	PV101		•	Power Gen. - Cascade
MGC400	•	•	•	EMS GC10		•	Power Gen. - Engine & Generator

*Murphy Industrial Harnesses and current transformers can be provided with MGC panels.

▼ PANELS AND SYSTEMS continued

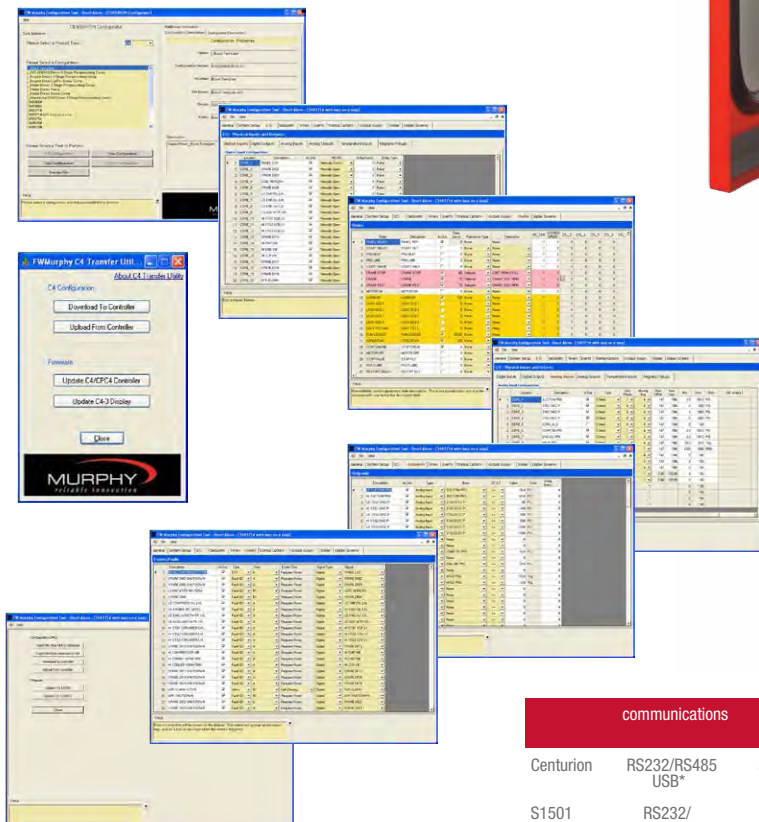
The Murphy product line includes a full line of control panels. for a wide range of applications - from engines and motors, to pumps and compressors. Our panels start with a standard common platform, giving you the ability to choose the instrumentation, layout and software to create a one-of-a-kind panel for your application. Experience all that our panel division has to offer - reliable control backed by full customer service.

Configurable Panel System for Equipment Monitoring and Protection with Available Autostart and Process Control
(Catalog Section 50)

Featured Product:

Basic Shutdown/Autostart Panel Featuring The Centurion™ Controller

- A hybrid of annunciator and configurable controller
- Digital monitoring system, alarm and shutdown features with autostart option
- Sequential state logic control with up to 6 closed loop controllers
- Software configuration tool option



	communications	I/O	expansion I/O	non-incendive inputs	intrinsically safe inputs	area classification
Centurion	RS232/RS485 USB*	53/12 NO/NC	user defined**	•	•***	CSA cl.1, div 2 grps B, C, D
S1501	RS232/ RS485	67/7 NO/NC		•	•	CSA cl. 1, div 1 groups C & D

* Communication ports utilized for operation visibility and control

** I/O can be of any configuration of available expansion modules

*** Available with use of external barriers

Full-Featured Control Panel Featuring The Centurion™ *PLUS* Controller

- Full-featured monitoring, control and data acquisition system
- Latest processing technology with full-color touchscreen HMI



	communications	complex calculations	I/O	configurable I/O expansion	non-incendive inputs	intrinsically safe inputs	area classification
Centurion <i>PLUS</i>	2 RS232/ RS485*	•	53/12 NO/NC	user defined**	•	•***	CSA c.I, div 2 grps B, C, D
3rd Party PLC	user defined*	•	user defined**	•	•***	•***	CSA cl. 1, div 2 groups C & D

* Communication ports utilized for operation visibility and control

** I/O can be of any configuration of available expansion modules

*** Available with use of external barriers

COMPRESSOR CONTROLS

Whether you are in need of basic shutdown, temperature scanning or full featured control — we have a full line of controllers designed to provide the right balance of control features for a variety of applications. Determine the level of control needed for your application, and we will match you with a controller with just the right mix of features.

Annunciators (Catalog Section 50)

Featured Product:

TTD™ Annunciator

- Digital annunciator with shutdown capabilities
- Monitors up to 48 user-configurable sensor inputs
- Communications ports included
- Additional options available, such as tachometer, pre/post lube, and lube no-flow detection



	DC power	ignition power	AC power	Div 1 classification	Div 2 classification	internal tachometer	hourmeter	NO/NC inputs
TTD	•	•			•	•	•	48
LCDT	•	•	•	•				47/45
S1501	•		•	•		•	•	26/64

Temperature Scanners (Catalog Section 10)

Featured Product:

TDXM Temperature Scanner

- Scans up to 24 channels
- Three adjustable trip points per channel
- Accepts any combination of J- or K- type ungrounded thermocouples
- Exhaust and Bearing temperature grouping capabilities

	points	digital display	communications (RS485)	DC power	ignition power	AC power	outputs
TDXM	24	•	•	•			3
TDX6	6	•		•	•	•	6
MDTM89	2	•		•	•	•	2



Controllers
(Catalog Section 50)

Featured Product:

The Centurion™ Controller

- Fully-configurable control and monitoring system
- Expandable to meet most 3-stage compressor applications
- No programming experience required – Off-the-shelf configuration handles the most commonly used control sequences
- C4 configuration tool available



Featured Product:

The Centurion™ PLUS Controller

- HMI touchscreen, full-featured controller
- Custom application programming
- Full time data logging
- Expandable communication capabilities



	analog inputs	thermocouple input	analog outputs	digital input	digital outputs	expandability	expansion I/O	communication ports	display
Centurion	12	8	2	32	10	2 modules	varies by module limited to 1 expansion module	2 RS485/RS232+USB	Monochrome 2.3" graphic display
Centurion PLUS	12	8	2	32	10	2 modules	varies by module up to 3 modules	2 RS485/RS232+USB	6 or 10" color touch screen

PROCESS MONITORING INSTRUMENTS

Monitoring the health of your equipment is critical to keeping it at optimum performance. Get clear and precise monitoring and control with our complete line of process monitoring instruments. Monitoring and control instruments help you protect the life of your engine by providing easy indication of critical engine functions.

Vibration Switches and Controls (Catalog Section 20)

Featured Product:

EVS-2 Vibration Switch

- Vibration (0 to 3.0 ips peak)
- Suitable for mounting at any angle
- Switch output and 4 to 20 mA analog vibration signal
- Rugged design

	vibration switch	monitor	4-20mA output	hazardous rated*
VS2	•			
VS2EX	•			•
EVS-2	•	•	•	•
CSS-series	•			•
VS94	•			



Level Maintainers and Level Switches (Catalog Section 15)

Featured Product:

LM500 Lube Level Maintainer

- Automatically maintains lube level
- Displays oil level and condition without shutting down
- Low level switch with optional (TF) "test feature"
- Positive sealing Thumb-Valve™ operation

	maintainer	sight glass	gage	level switch test feature	hazardous rated*
LM500	•	•		•*	•
LM300-series	•	•	•*	•*	
L150			•		
EL150-series			•	•	•
L129		•			
L100-series		•			
OPLH-series			•		•*

* - TF models only



Scrubber Level Controls
(Catalog Section 15)



Featured Product:

MLS Series Liquid Level Switch

- Designed for harsh, gas compressor scrubber applications
- 304 stainless steel float
- ANSI 12.27.01 single seal
- Rated for 2000 psi [13.8 MPa] [138 bar] working pressure
- Dependable design with fewer moving parts

	pneumatic	electric	SPDT	DPDT option	scrubber vessel connection	hazardous rated*	DVO pilot valve	DVOR w/ filter regulator
MLS015		•	•		1.5 NPT	•		
MLS020		•	•		2 NPT	•		
LS200		•	•	•	2 NPT	•		
LS200N	•				2 NPT		•	•

*specific models only

Valves
(Catalog Section 55)

Featured Product:

DVU Series Dump Valve

- For Separators/Scrubbers to 2000 psi
- Hex union allows plug and seat replacement without piping removal
- Operates on 30-70 psi control pressure



	scrubber vessel connection	outlet pipe size	max. working pressure
150-series*	1 NPT	1/2 NPT	1800 psi
175-series*	1 NPT	3/4 NPT	1800 psi
2100-series	2 NPT	1 NPT	500-2000 psi

*316 stainless steel models available

Fuel Valves
(Catalog Section 55)

Featured Product:
M50 Series Fuel Shutoff Valve

- Instant response to shut off signal
- Positive valve closure
- Vents gases trapped after shutdown



	shutoff valve	check valve	pressure relief valve	energize to open	applications
SV-series	•			•	diesel
CKV		•			diesel
PRV			•		diesel
M25	•				natural gas
M50	•				natural gas

Pressure and Temperature Switches and Transmitters (Catalog Section 5/10)

Featured Product:
PXT-K Series Pressure Transmitters

- 4-20 mA output signal
- Precision etched silicon sensor
- Corrosion resistant construction
- High stability



	pressure	temperature	SPDT	switch	transmitter	direct mount
PSB	•		• factory set	•		•
TSB		•	• factory set	•		•
PXT-K	•				•	

Temperature Sensors
(Catalog Section 10)



Featured Product:
**Thermocouple Encased
in 1/4" Stainless Steel**

- 316 braided armor with Teflon overlay extension wire
- K type, 6" and 10" long 1/4" probes
- Can be bent anywhere along its length to a 90° angle
- Tip sensitive to minimize temperature influence from surrounding environment

	sensor	transmitter	direct mount	conduit head	output
TC-series	J/K		•	•	mv
1/4" Thermocouple	K		•		mv
RTD	100 ohm platinum		•	•	100 ohm 3-wire
RTDT	100 ohm platinum	4-20 mA	•	•	4-20 mA



Speed Measurement and Switches
(Catalog Section 20)

Featured Product:
SHD30 Tach/Hourmeter

- Digital tachometer/hourmeter with overspeed trip point
- Normally open and normally closed overspeed alarm and shutdown
- Approved for class I, division 2 gps. c & d hazardous areas

	speed sensor	speed switch	adjustable setpoint	output	SPDT	magnetic pick up	CD ignition	alternator
MP (mag pickup)	•			pulsed		•		
SS300-series		•	1	relay	•	•		
OS77-series		•	1	transistor		•		•
HD903-series		•	2	relay	•	•		•
SHD300		•	1	solid state /relay	•	•	•	

MURPHY®

by **ENOVATION** CONTROLS

ENOVATION CONTROLS CORPORATE HEADQUARTERS

5311 S 122ND EAST AVENUE
TULSA, OK 74146

ENOVATION CONTROLS – SAN ANTONIO OFFICE

5757 FARINON DRIVE
SAN ANTONIO, TX 78249

ENOVATION CONTROLS – HOUSTON OFFICE

105 RANDON DYER RD
ROSENBERG, TX 77471

ENOVATION CONTROLS – UK OFFICE

CHURCH ROAD LAVERSTOCK
SALISBURY SP1 1QZ UK

MURPHY ECONTROLS TECHNOLOGIES (HANGZHOU) CO, LTD.

77 23RD STREET
HANGZHOU ECONOMIC & TECHNOLOGICAL DEVELOPMENT AREA
HANGZHOU, ZHEJIANG 310018 CHINA

DOMESTIC SALES & SUPPORT

ECONTROLS PRODUCTS

PHONE: 210 495 9772
FAX: 210 495 9791
EMAIL: INFO@ECONTROLS.COM
WWW.ECONTROLS.COM

MURPHY PRODUCTS

PHONE: 918 317 4100
FAX: 918 317 4266
EMAIL: SALES@FWMURPHY.COM
WWW.FWMURPHY.COM

MURPHY CONTROL SYSTEMS & SERVICES

PHONE: 281 633 4500
FAX: 281 633 4588
EMAIL: CSS-SOLUTIONS@FWMURPHY.COM

MURPHY INDUSTRIAL PANEL DIVISION

PHONE: 918 317 4100

INTERNATIONAL SALES & SUPPORT

UNITED KINGDOM

PHONE: +44 1722 410055
FAX: +44 1722 410088
EMAIL: SALES@FWMURPHY.CO.UK
WWW.FWMURPHY.CO.UK

CHINA

PHONE: +86 571 8788 6060
FAX: +86 571 8684 8878
EMAIL: APSALES@FWMURPHY.COM

LATIN AMERICA & CARIBBEAN

PHONE: 918 317 2500
EMAIL: LASALES@FWMURPHY.COM

SOUTH KOREA

PHONE: +82 70 7951 4100
EMAIL: SKOREASALES@FWMURPHY.COM

INDIA

PHONE: +91 91581 37633
EMAIL: INDIAALES@FWMURPHY.COM



USA-ISO 9001:2008 FM 28221
UK-ISO 9001:2008 FM 29422
CHINA-ISO 9001:2008 FM 52385
Registered Facilities



Printed in the USA

Distributed by:

In order to bring you the highest quality, full featured products, we reserve the right to change our specifications and designs at any time.

Specifications and performance data subject to change without notice. Certified specifications and performance data available upon request.

All trade marks and service marks used in this document are the property of their respective owners.

www.fwmurphy.com

1311217 5-13